

Our Work in the South West

Local Area Committee

Marta Alfaro Tirado, Nature Recovery Manager (South)
Sheffield & Rotherham Wildlife Trust

wildsheffield.com

Who we are

Throughout Sheffield & Rotherham, from our **streets & neighbourhoods** to the wider **countryside**, there will be an **abundance** of nature that is protected, cared for and **experienced** by everyone

Who we are



Creating a Network for Nature

We take care of 15 nature reserves across Sheffield and Rotherham.



Connecting People with Nature

We connect people with the natural world through innovative programmes.



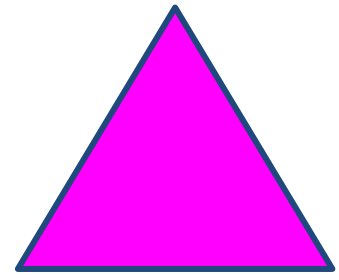
Taking Action for Nature and Wildlife

We campaign for a better deal for nature and inspire people to take action in their own lives.



Sheffield & Rotherham
Wildlife Trust

For nature, for everyone



Nature Reserves

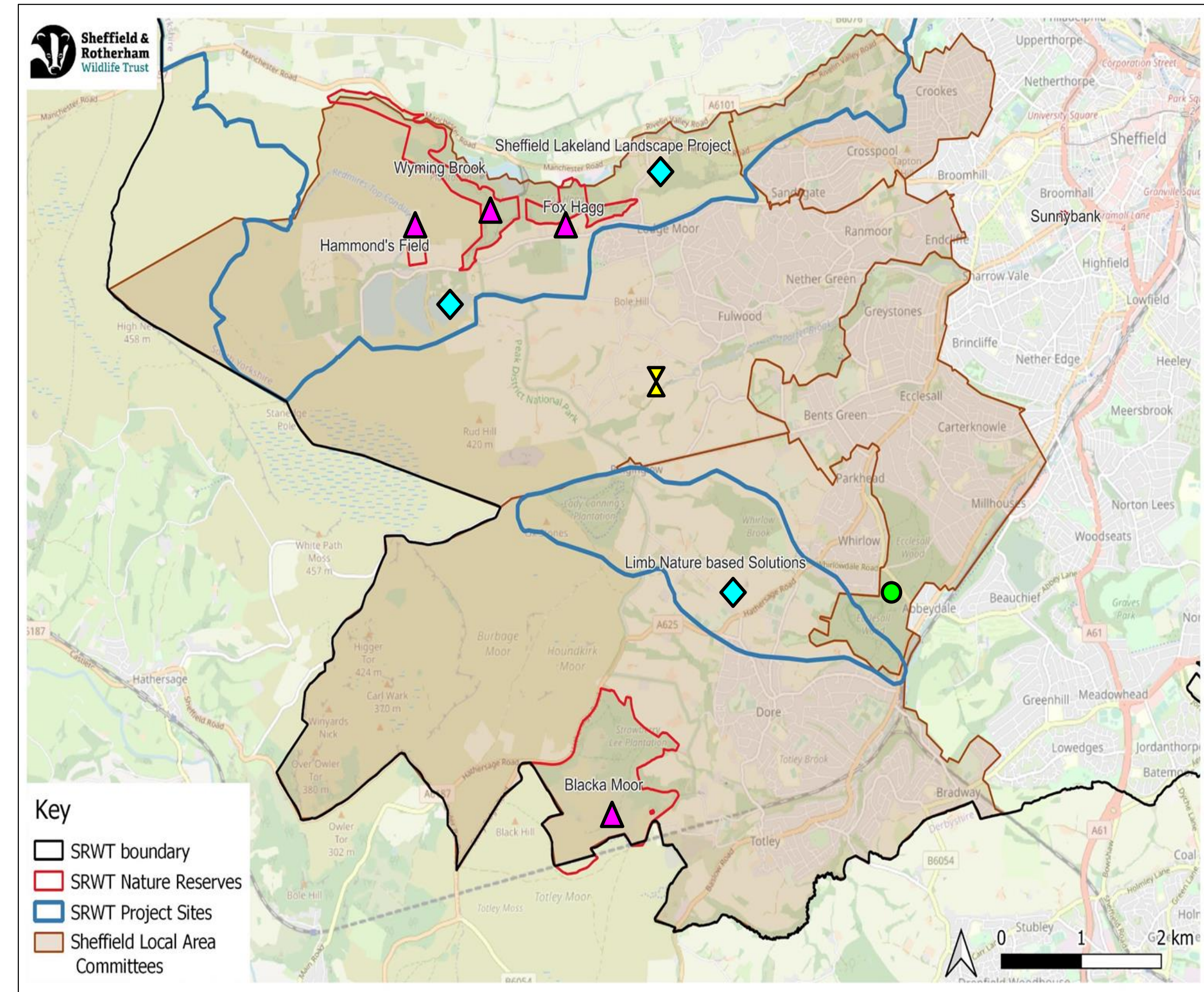
- Blacka Moor
- Hammond's Field
- Wyming Brook
- Fox Hagg



Viviparous lizard at Blacka Moor © Elaine Barber

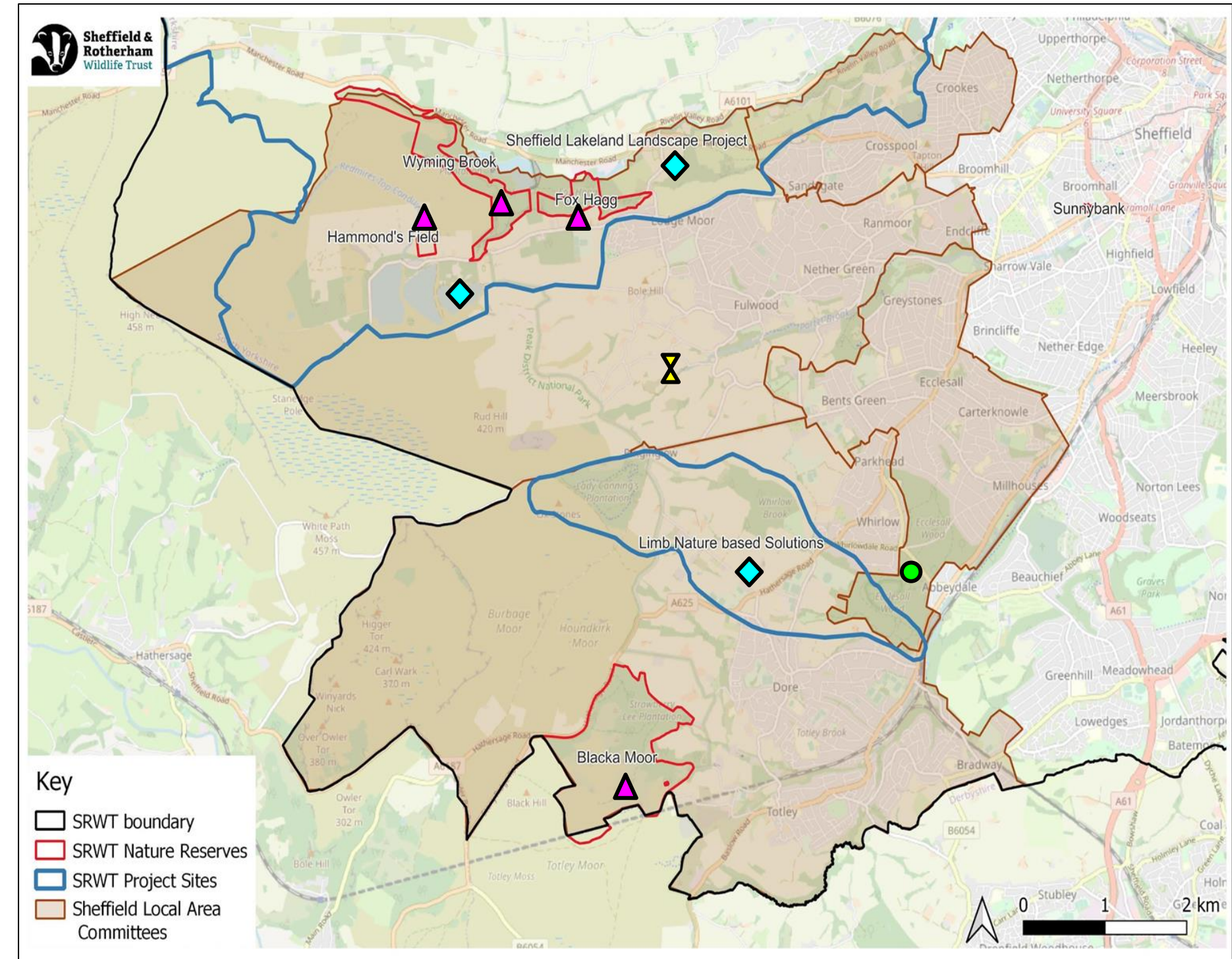


Volunteers building a dead hedge at Wyming Brook © Marta Alfaro



◆ Partnership work

- Sheffield Lakeland Landscape Partnership (SLLP)
- Redmires
- Limb Brook NbS Demonstrator



Water Vole © Tom Marshall



Leaky dams in Limb Brook © Rob Jones



Outdoor Learning

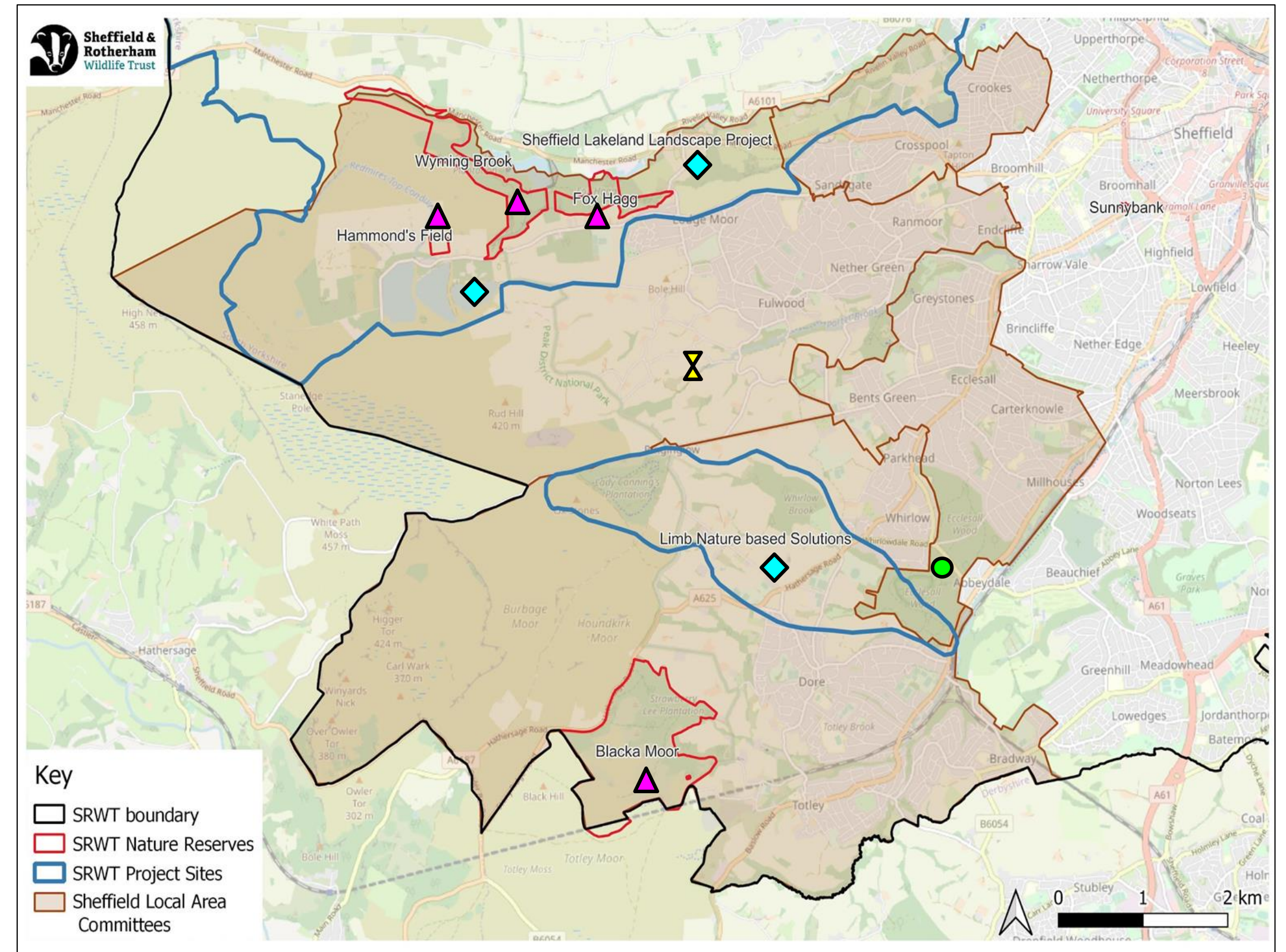
- School Sessions
- Wild Play



Outdoor Learning at our Nature Reserves
© HD

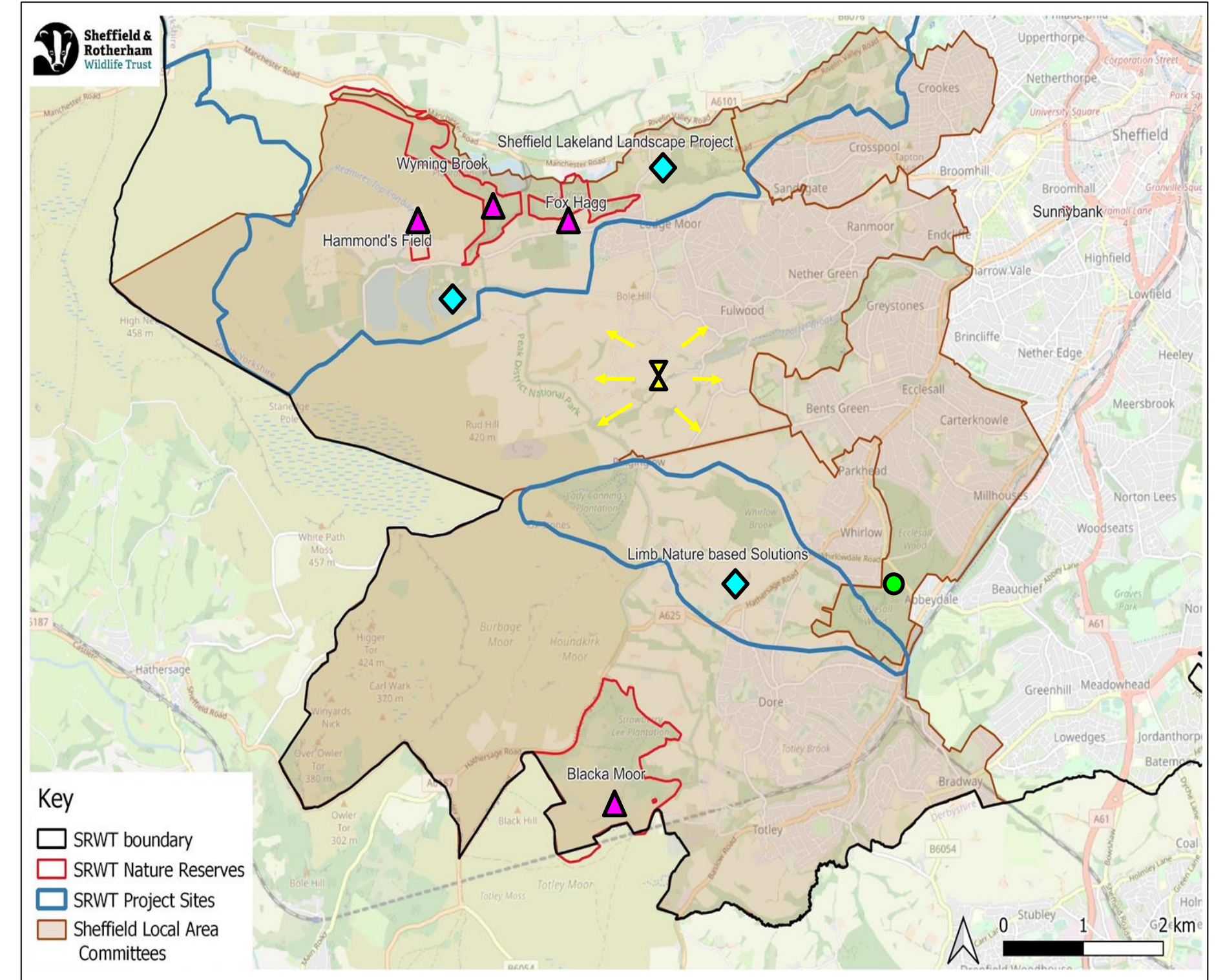
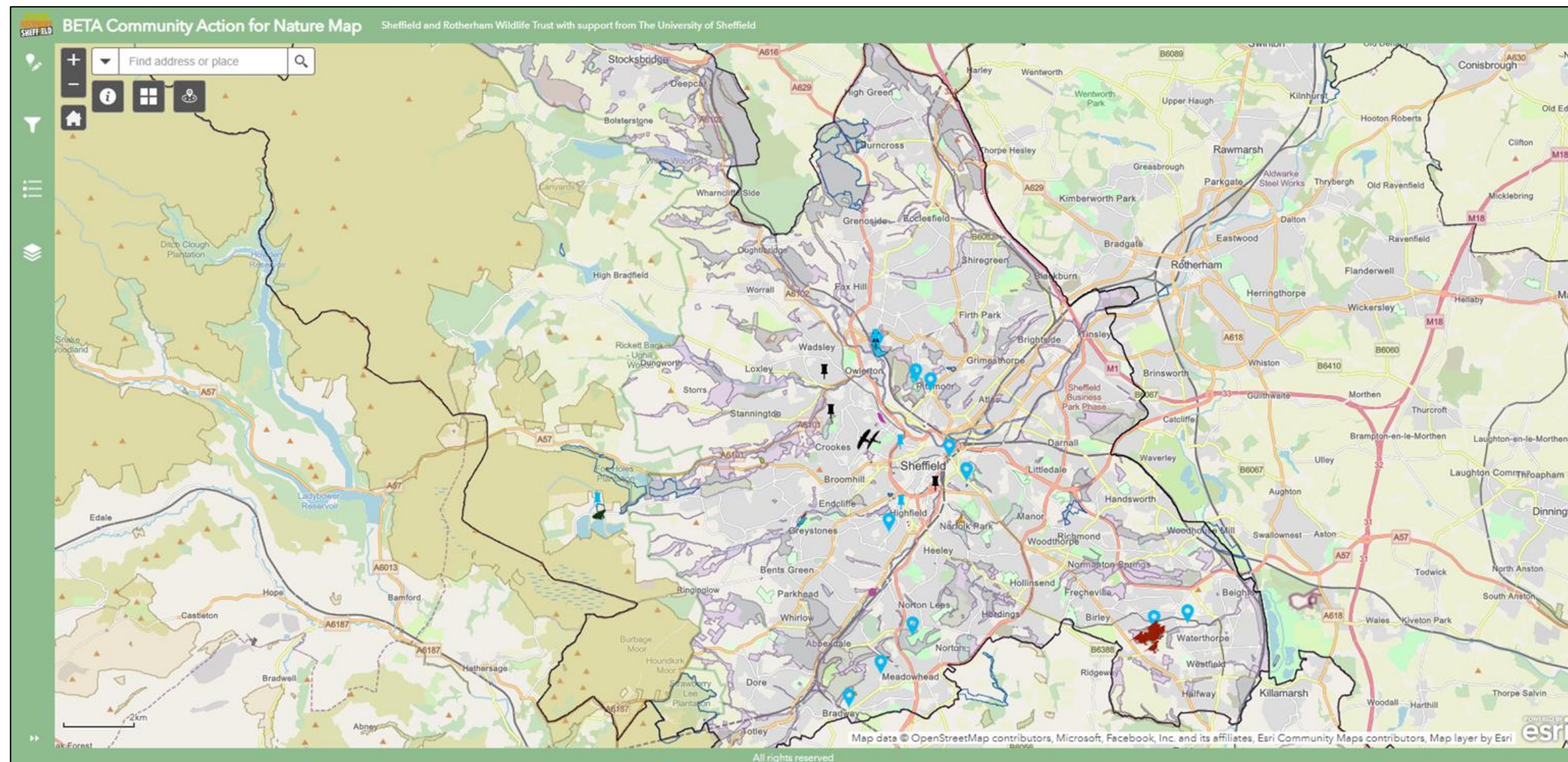


School Sessions © Helena Dolby



Nature Recovery Sheffield

Community Action for Nature Map



New projects



**Sheffield &
Rotherham**
Wildlife Trust

- Land Management Advice Service
- Our offer to young people
 - Development of a plan focused on young people
 - Working on a partnership with South West Local Area Committee (SW LAC) and the Youth Service
 - Blacka Moor practical conservation work tailored to younger people

Thank you

 Sheffield & Rotherham Wildlife Trust

 wildsheffieldandrotherham

 WildSheffield

wildsheffield.com